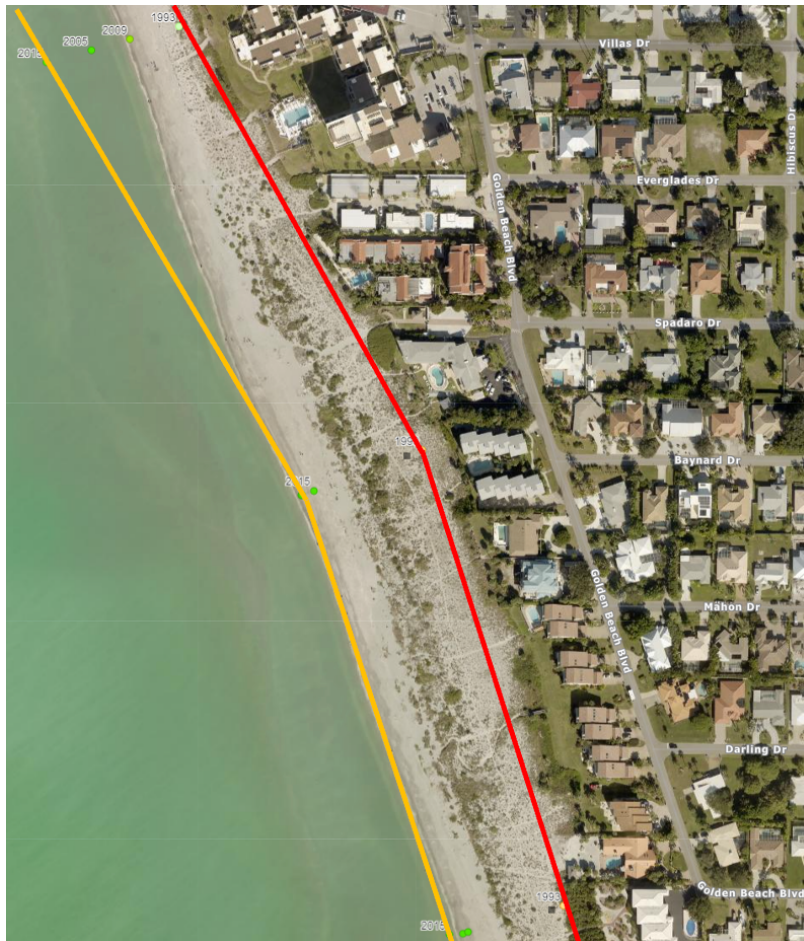




## Golden Beach Newsletter July 2022



### What is the Mean High Water Line, and how does it relate to public and private sand?

In the local newspaper and on Nextdoor there has been discussion about about privately owned beachfront and public land. The questions is: where do private beachfront and public land intersect?

The answer is at the Mean High Water Line (MHWL). The MHWL is *“the intersection of the plane of the MHW tidal datum with shore.”* In everyday English, the average of daily high tides.

The State of Florida considers the MHWL to be the dividing line between private and public coastal lands. Land to the dry side of that line can be owned and managed as private property. Land to the other side of the line is considered public property.

The line can change over time! The red line on this map of Golden Beach above shows the line as it stood in 1993. The orange line, as it stood in 2015. This data is taken from Sarasota public records, available here:

<https://sarco.maps.arcgis.com/apps/webappviewer/index.html?id=d19b0d215ac646c19507763b3be21a09>

### **FOR TURTLES IN NEED, WHO YOU GONNA CALL?**

Hatchlings that appear injured or heading away from water? Call STCRP at **941-388-4331**

A nest being vandalized or turtle harassed? Call Florida Fish & Wildlife at **888-404-3922**

Sick, injured or dead turtles or marine mammals? Mote Stranding Hotline at **888-345-2335**

### **Sea Turtle Nesting Season is April 15-October 31.**

Help the turtles and hatchings by:

Filling in holes and knocking down sandcastles at the end of the day

Respecting marked sea turtle nests

Keeping ALL lights off the beach, including cellphone flashlights and fishing lights

### **Beach Access Update**

A contract for installation of a new fence and gate has been let to H&Y Fence of Sarasota, and the permit process is underway with the City of Venice. This rendering shows the design adopted by GBAI.

The design goals remain:

- \*reducing trespass at the Golden Beach access,
- \*while preserving the visual beauty of the access,
- \*in a manner that creates minimal inconvenience for neighbors, and
- \*all at a reasonable cost.





## Social Event

Golden Beach will enjoy a Happy Hour social event at the beach access on **Sunday, July 31<sup>st</sup>** from 5 pm until 7 p.m. Please bring an appetizer to share if you like, and your beverage of choice. Please feel free to bring a chair.

## Free Bicycle Registration Service through Venice Police Department

Venice is a great town for bicycling! With flat, wide streets, dedicated bicycle lanes, the Legacy Trail, and the Ventian Waterway Park, we have a wonderful environment for cyclists of all levels.

However, it is a truly awful feeling to return to where you parked your bike ... to find it gone.

The Venice Police Department (VPD) has a free program for owners to register their bikes. VPD logs the registration information and issues a bike identification sticker to help in the reunification of bike and owner.

The process is straightforward. Below is how to register your bike with the VPD.

1. Fill in a registration form, available at <https://www.venicegov.com/home/showpublisheddocument/9610/637753372757970000>
2. Print out and bring the completed form to Venice Police Department, 1575 E. Venice Avenue.
3. VPD registers your bike and issues a sticker with your bike's registration number.
4. Apply the sticker onto your bike, near the serial number if possible.

Bicycle Registration Venice Police Department Venice, Florida		DATE 6/15/22	DECAL NUMBER 6547	
OWNER INFORMATION				
NAME: (LAST, FIRST MI) XXXXXXXXXXXX			DATE OF BIRTH XXXXXXXXXX	
ADDRESS XXXXXXXXXXXX	CITY Venice	STATE FL	PHONE XXXXXXXXXX	CELL XXXXXXXXXX
BICYCLE INFORMATION				
MAKE Specialized	MODEL Stump Jumper	SERIAL #: M2G29409		
COLOR Green	BIKE SPEED 8 Internal Hub	TYPE: OTHER BOYS / GIRLS / 3 WHEEL	FRAME SIZE Medium	BRAKE TYPE Caliper
COMMENTS - LIST IDENTIFIABLE CHARACTERISTICS				
Serial number on bottom of bottom bracket; 26" wheels; Shimano Internal Hub				



*A good lock and a VPD sticker... your bike's best friends.*

## **Congratulations to Patty Meyer!**

Venice Harmony Chorus recently named Golden Beach neighbor Patty Meyer as Director. Patty moved to Golden Beach from Anchorage, Alaska, where she was also involved in the chorus community as a member and leader. The Venice Harmony Chorus welcomes new members. Call Patty at 907-717-5488 for more information.

## **It's that season again....**

Only one hurricane to date in 2022, but there are plenty more letters in the alphabet.

You can find current NOAA (National Oceanic and Atmospheric Administration) forecasts here, as well as data & tools and educational resources.

<https://www.nhc.noaa.gov/gtwo.php?basin=atlc&fdays=5>

## **Contacting Golden Beach Associates -- 2 easy ways!**

Need to contact Golden Beach Associates with a problem, a question, or a suggestion? There are two quick and easy ways:

Email: [contact@goldenbeachassociates.com](mailto:contact@goldenbeachassociates.com)

Or use the *Contact Us* page on the Golden Beach website:

<https://www.goldenbeachassociates.com/>



## **Membership**

If you haven't joined GBAI but do want to -- memberships are still available. Need an application? Go to: [www.goldenbeachassociates.com](http://www.goldenbeachassociates.com). Click on *Contact Us* on the upper right. On the Contact Us page click on the blue link for the 2022 Membership Application.

## **GB emails going into your Spam/Junk folder?**

GBAI *manually* sends out emails, a batch at a time. To help guide GB emails to your inbox, add 2 emails to all your computer address books and contacts (Gmail webmail, Apple mail, Contacts, Outlook, Thunderbird, etc). Add:

[news@goldenbeachassociates.com](mailto:news@goldenbeachassociates.com) and  
[contact@goldenbeachassociates.com](mailto:contact@goldenbeachassociates.com)